

MICROLINKS TECHNOLOGY CO.,LTD

User's Manual

Microscope Installation Manual

MLTC

2015/10/05 Update Ver.2.8A

Content

- 1. **CD Install**3
- 2. **Install and uninstall Microscope Application Program**4
 - 2.1 Install application program4
 - 2.1.1 Start setup program4
 - 2.1.2 Microscope AP Setup Wizard4
 - 2.1.3 Choose installation route5
 - 2.1.4 Program Installing5
 - 2.1.5 Install Completed6
 - 2.1.6 AP shortcut on desktop.....6
 - 2.2. Uninstall Microscope AP6
 - 2.2.1 Choose from All Program (Fig. 2-8) to uninstall Microscope AP.6
 - 2.2.2 Confirm to Uninstall MICROSCOPE AP7
 - 2.2.3 Uninstall MICROSCOPE AP7
 - 2.2.4 Uninstall AP completed.....7
- 3. **Install and Uninstall Microscope Driver**8
 - 3.1 Install Driver - UPMOST.....8
 - 3.1.1 Install Drivers – MPB728
 - 3.1.2 Install Upmost driver completed.9
 - 3.2 Install Driver - LIVECAPSERVICE10
 - 3.2.1 Preparing Setup Driver.....10
 - 3.2.2 Install Driver LIVECAPSERVICE11
 - 3.2.3 Install LIVECAPSERVICE Completed.....13
 - 3.3 Install Driver - Silicon Laboratories14
 - 3.3.1 Install CP21x Driver14
 - 3.3.2 License Agreement confirmation.....15
 - 3.3.3 Install CP210x Completed15
 - 3.4 Uninstall Drivers16
 - 3.4.1 Confirm to uninstall driver16
 - 3.4.2 Preparing to remove driver.....16
 - 3.4.3 Closed Related Programs17
 - 3.4.4 Uninstall the LIVECAPSERVICE driver17
 - 3.4.5 Uninstall LIVECAPSERVICE completed17

1. CD Install

The package provides setup CD. If the setup CD is missing or damaged, please download setup files from <http://www.vitiny.com>. Please see the following steps to complete the Microscope installation.

- **Step 1: Please insert CD.**
- **Step 2: Install Microscope application program(AP). Please refer to section 2.1.**
- **Step 3: Install Microscope Drivers, please refer to Section 3.1-3.3.**

To uninstall Drivers and AP from PC, please follow the below 2 steps.

- **Step 1: Uninstall the microscope AP, please refer to Section 2.2.**
- **Step 2: Uninstall the microscope drivers, please refer to Section 3.4.**

Please insert the CD to the CD-Rom. The computer will read the CD and show below window.



Fig 1-1 Install Window

If no window showed up, please open the CD files and choose Autorun.exe (Fig 1-2), then the same window (Fig 1-1) will pop up.



Fig.1-2 Autorun.exe icon

2. Install and uninstall Microscope Application Program

Please select the Fig.1-1 to start setup Microscope application program.

2.1 Install application program

2.1.1 Start setup program

First, click “Install Microscope application program”, next, select language (Fig. 2-1), the initial language will follow user’s PC OS. Click “Cancel” to setup, click “OK” to continue.



Fig 2-1seup language window

2.1.2 Microscope AP Setup Wizard

After language select, “Next” (Fig 2-2) to continue install. Click “Cancel” to exit setup. In Fig 2-2s, “NAME” represents MICROSCOPE’s model number, and “X.XXX.XXXx” represents the AP version.

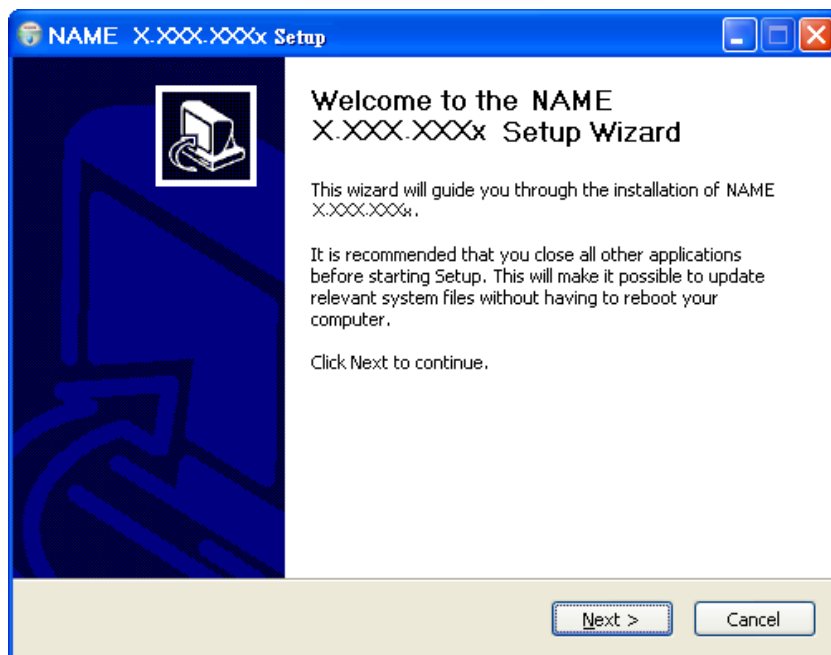


Fig 2-2 Microscope AP setup wizard

2.1.3 Choose installation route

Choose the installation route (Fig.2-3). To change the file route, click “Browse” to change setup path, then click “Install” to continue.

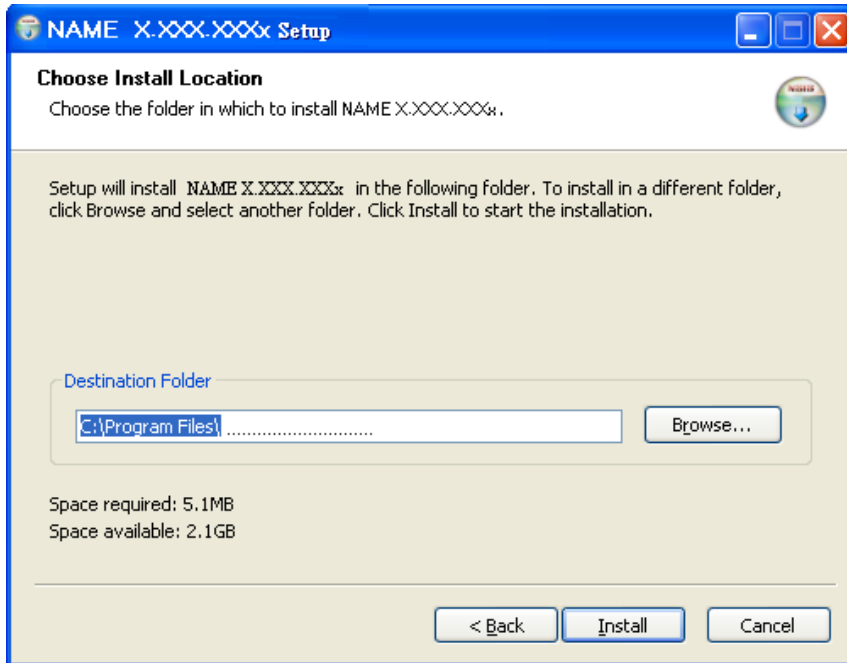


Fig 2-3 choose installation route

2.1.4 Program Installing

Program installing (Fig 2-4). Please wait.

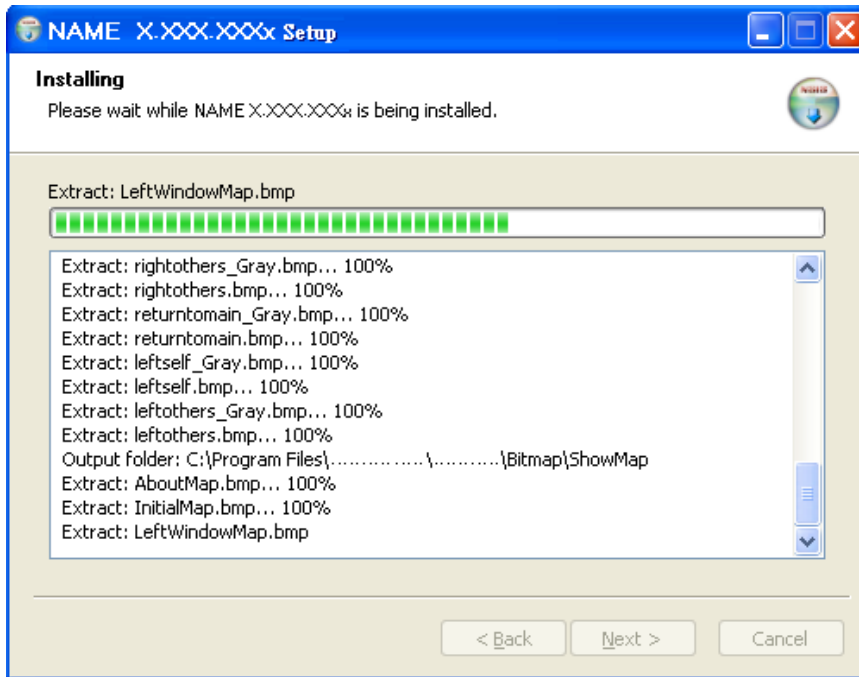


Fig 2-4 Program installing

2.1.5 Install Completed

When the AP install completed (Fig 2-5), click “Finish” to exit wizard.

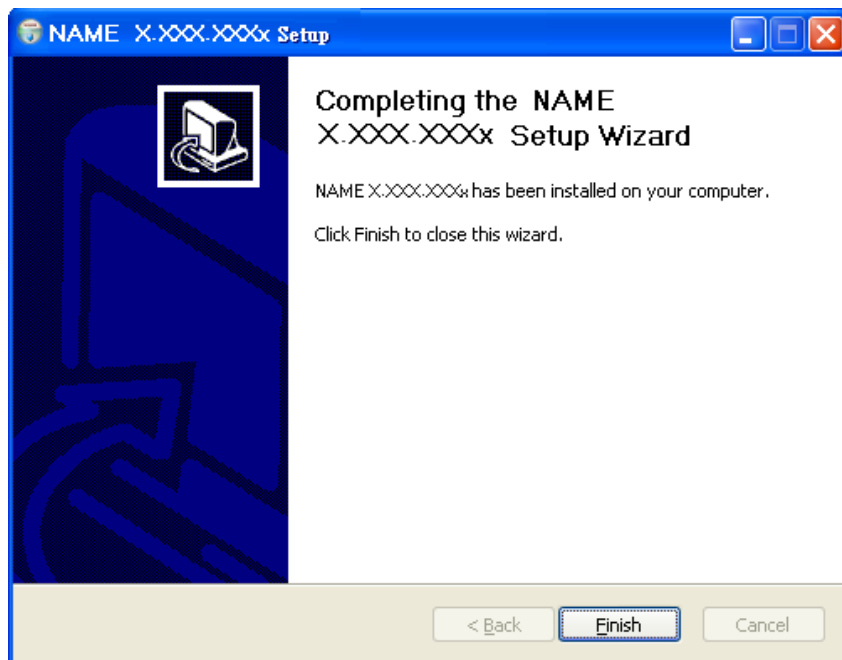


Fig 2-5 AP install completed

2.1.6 AP shortcut on desktop.

A shortcut of Microscope AP will show on the Desktop as Fig 2-6.



Fig 2-6 AP shortcut icon

Microscope shortcut (Fig 2-6) will show on the Desktop. Or go “Start”-> All Programs-> MicroLinks Technology -> Microscope (see Fig 2-7).

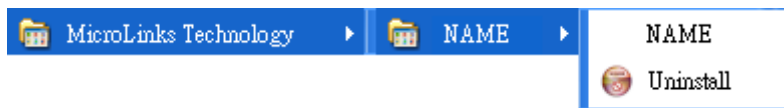


Fig 2-7 Microscope in All Programs

2.2. Uninstall Microscope AP

2.2.1 Choose from All Program (Fig. 2-8) to uninstall Microscope AP.

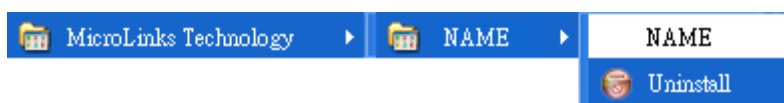


Fig.2-8 Uninstall MICROSCOPE AP

2.2.2 Confirm to Uninstall MICROSCOPE AP

Click “Yes” to continue uninstall AP. “No” to cancel uninstall. (Fig.2-9)

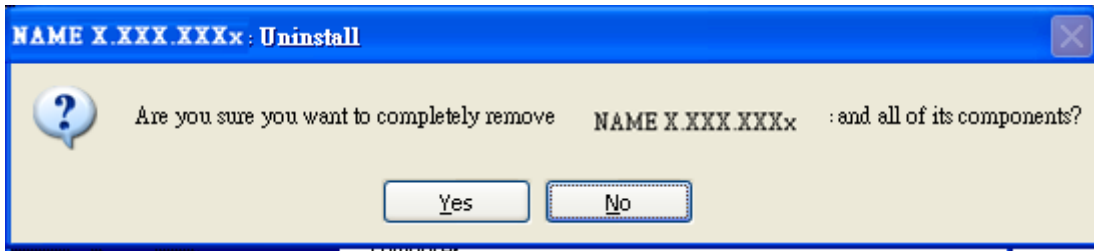


Fig.2-9 Confirm to Uninstall AP

2.2.3 Uninstall MICROSCOPE AP

Please wait while Uninstalling the MICROSCOPE AP (Fig.2-10).

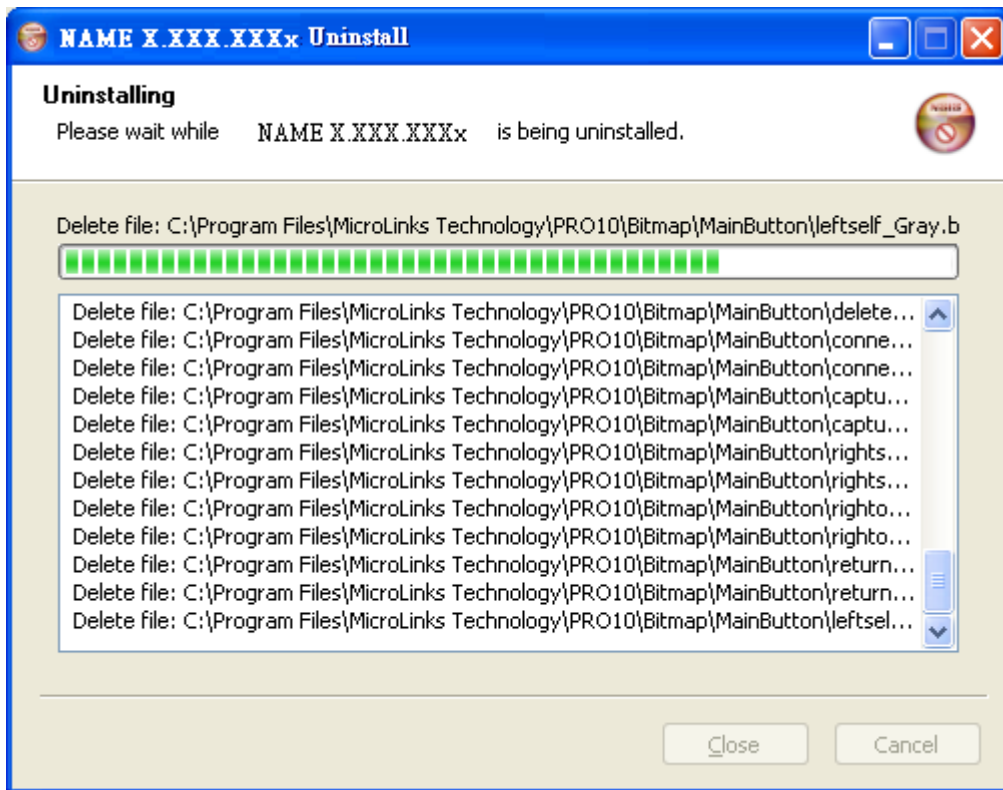


Fig.2-10 Uninstalling

2.2.4 Uninstall AP completed

MICROSCOPE AP was successfully removed from your PC, click OK to finish.



Fig. 2-11 Uninstall Completed

3. Install and Uninstall Microscope Driver

3.1 Install Driver - UPMOST

Cancel or Install Driver. Click OK to confirm install. Refer to Fig 1-1. There are three drivers needs to be installed. .



Fig 3-1 Cancel or Install the Driver

3.1.1 Install Drivers – MPB72

Click Next to proceed installing see Fig 3-2 &3-3.

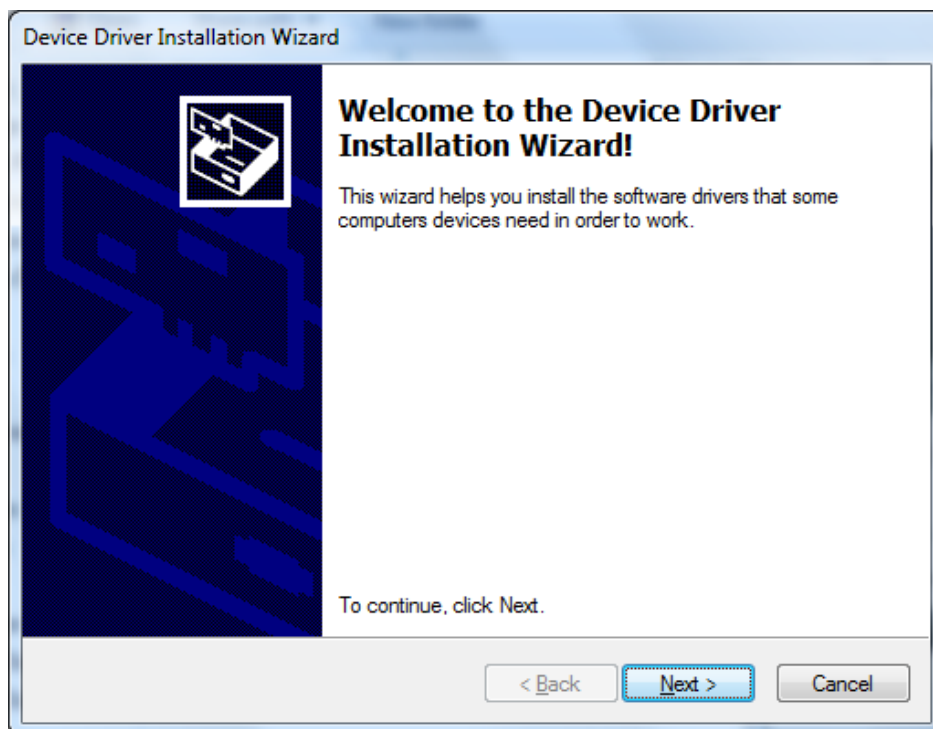


Fig 3-2 Install window

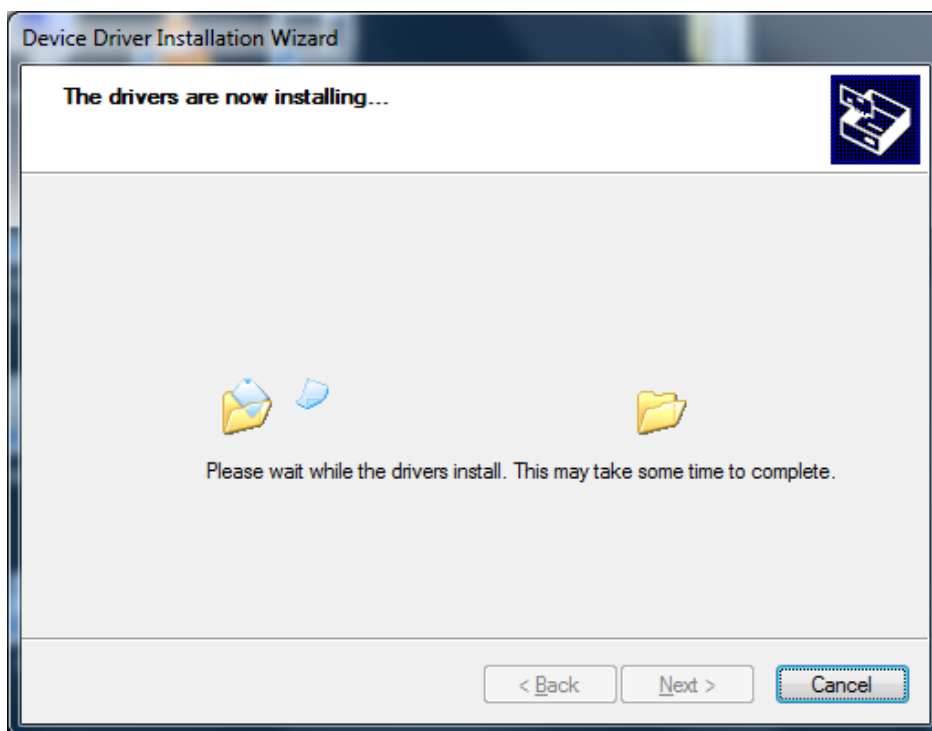


Fig 3-3 Wait while Installing UPMOST driver

3.1.2 Install Upmost driver completed.

Driver install completed, see Fig 3-4.

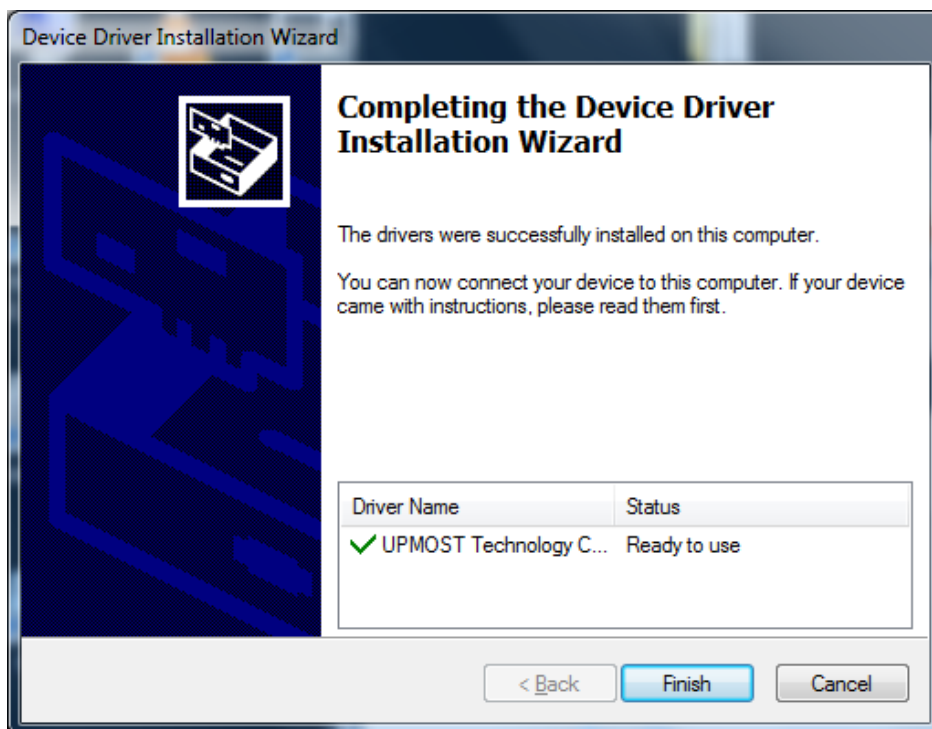


Fig 3-4 Install completed

3.2 Install Driver - LIVECAPSERVICE

Cancel or Install Driver. Click OK to confirm install.

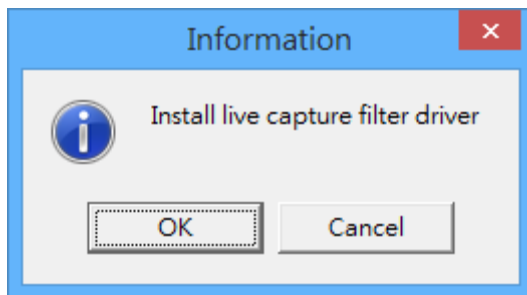


Fig 3-5 Cancel or Install Driver

3.2.1 Preparing Setup Driver

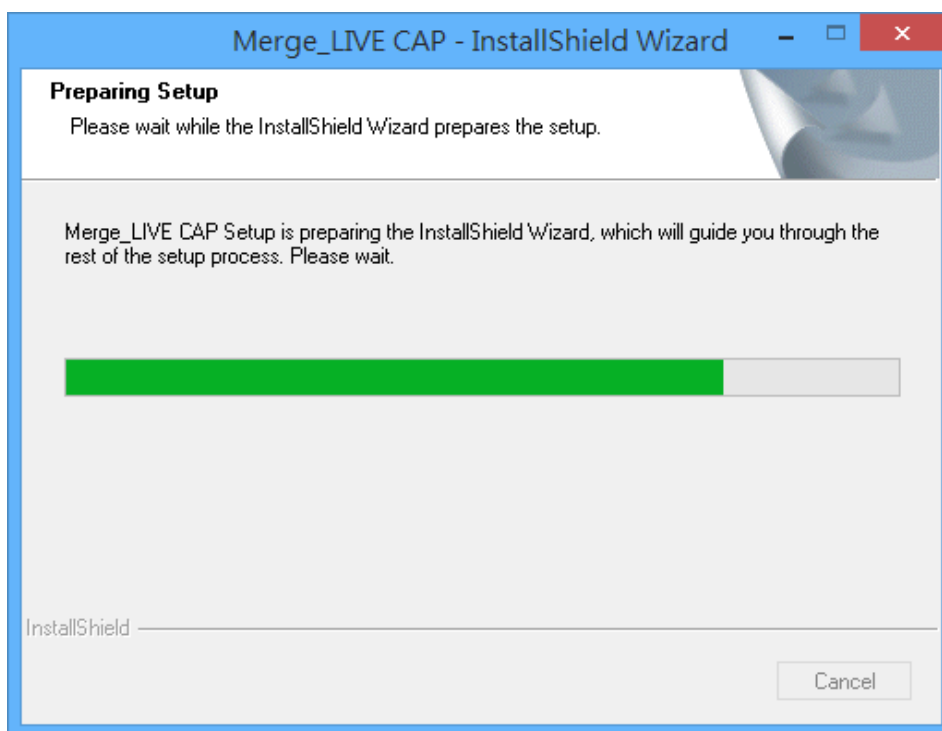


Fig 3-6 Preparing setup the driver

3.2.2 Install Driver LIVECAPSERVICE

Click Next to enter install procedure, see Fig 3-7.

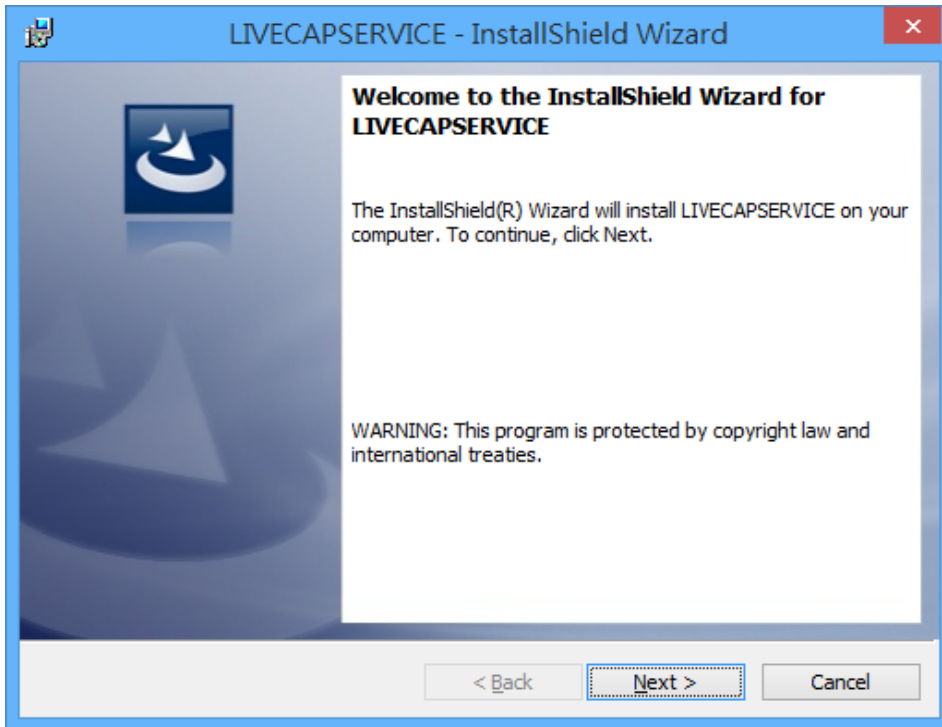


Fig 3-7 Welcome install window

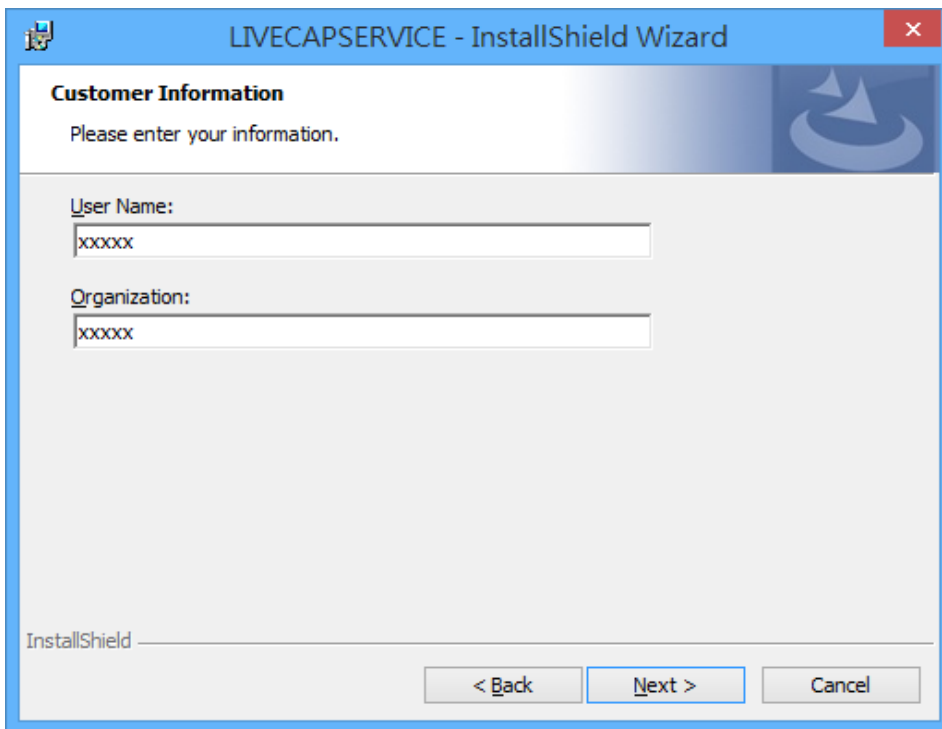


Fig 3-8 Input Customer Information

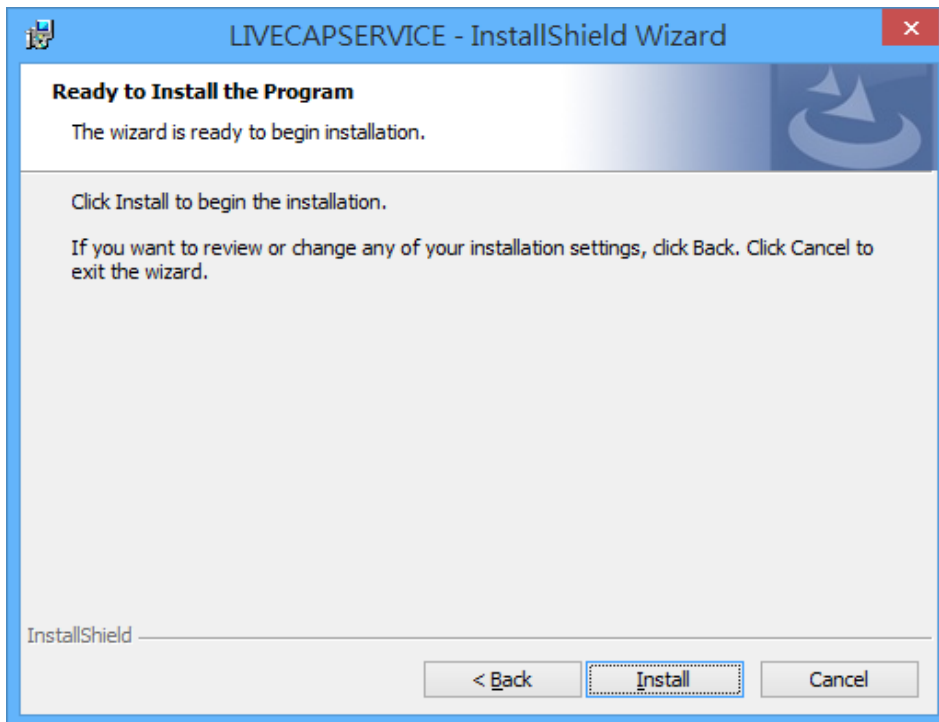


Fig 3-9 Confirm to install LIVECAPSERVICE driver

Please wait patiently when driver is installing, it might take few minutes. See Fig 3-10.

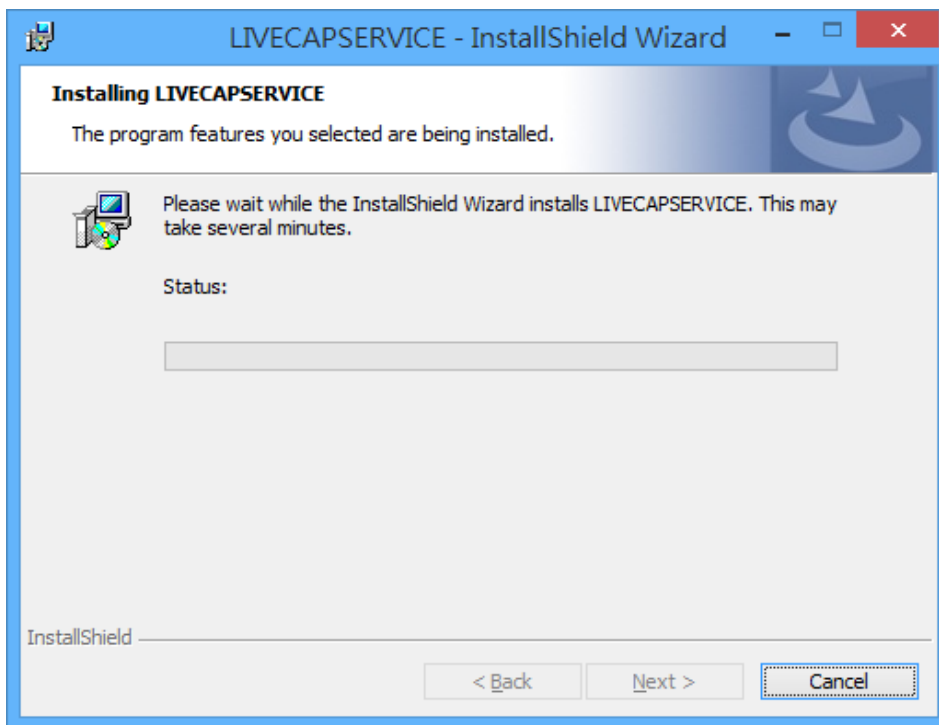


Fig 3-10 Installing LIVECAPSERVICE driver

3.2.3 Install LIVECAPSERVICE Completed.

Click Finish to complete install, PC re-start is necessary. See Fig 3-11 and 3-12.

*Suggest to restart PC after three drivers are installed.

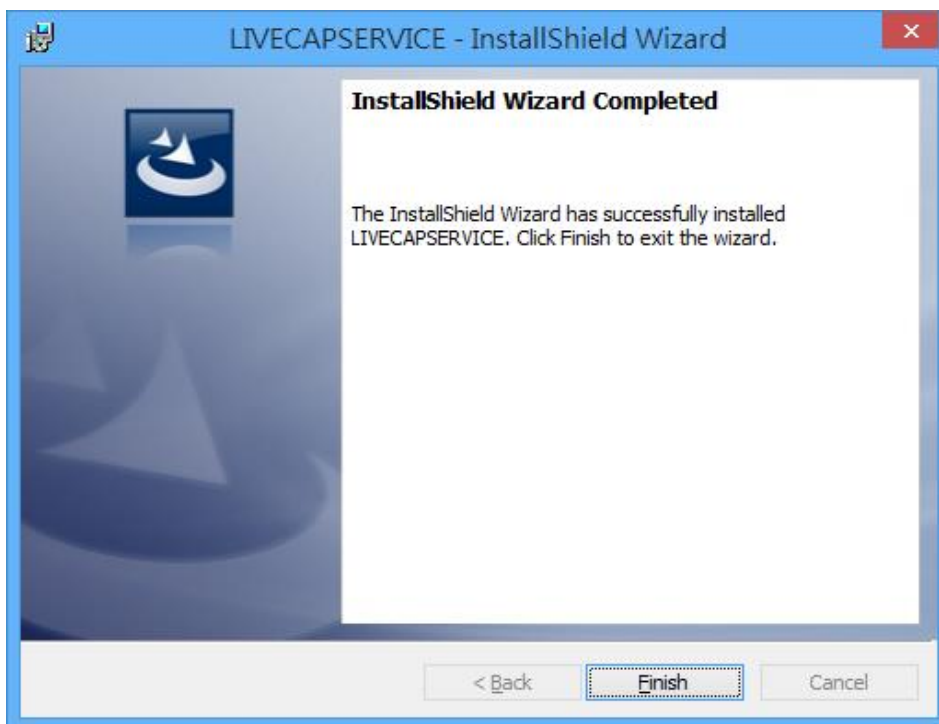


Fig 3-11 Install Completed

Choose to restart computer now (Choose YES) or later (Choose NO).

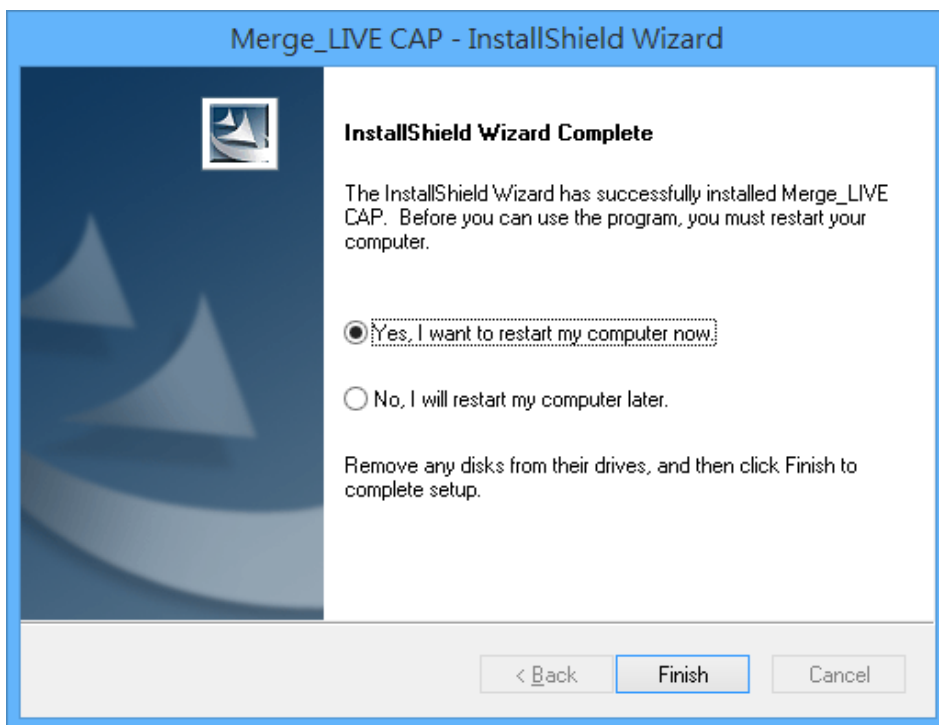


Fig 3-12 Choose to restart computer now or later

3.3 Install Driver - Silicon Laboratories

Cancel or Install Driver. Click OK to confirm install Silicon Laboratories driver.

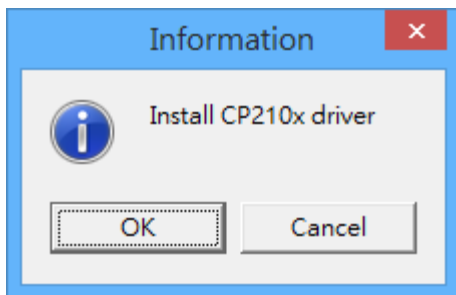


Fig 3-13 Cancel or install Driver

3.3.1 Install CP21x Driver

Click Next to enter install procedure. See Fig 3-14.



Fig 3-14 Welcome install window

3.3.2 License Agreement confirmation

Choose I accept, then click Next.

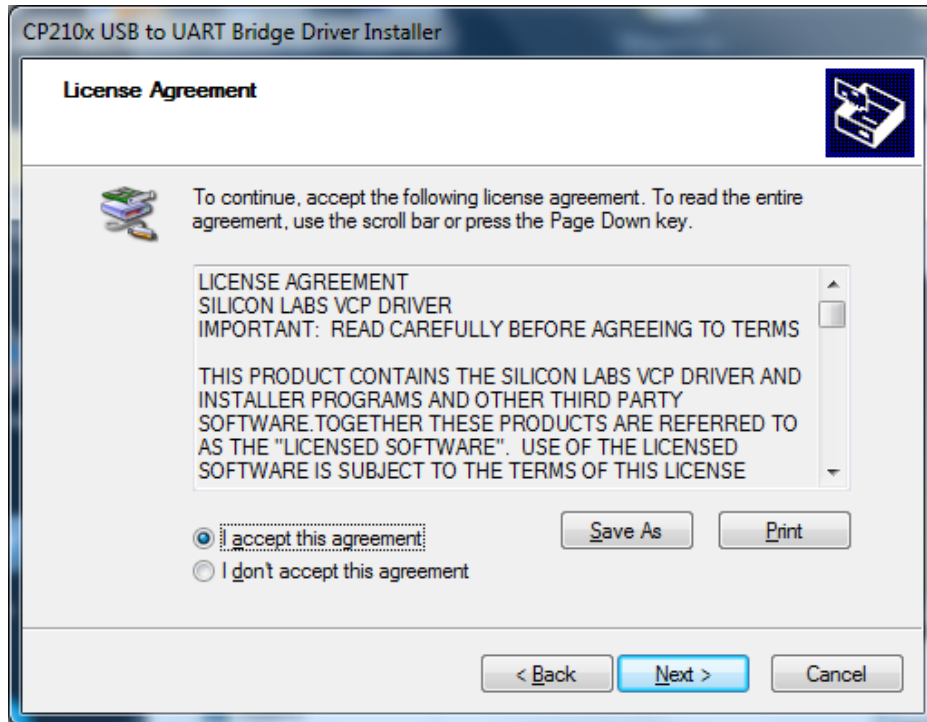


Fig 3-15 License Agreement window

3.3.3 Install CP210x Completed

Click Completed to finish all install. See Fig 3-16.

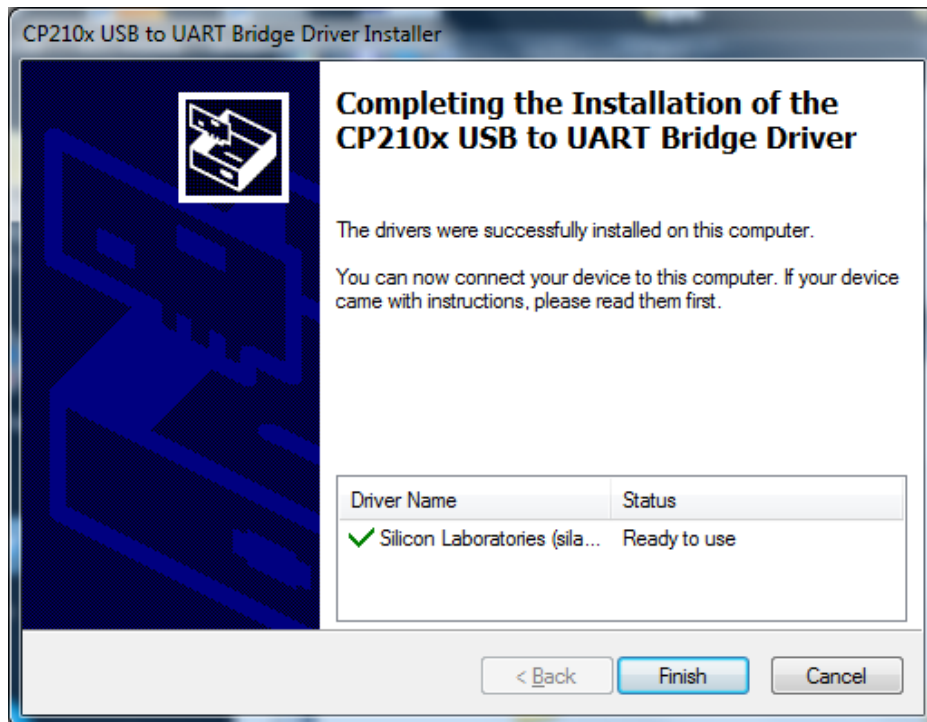


Fig 3-16 Install Completed

3.4 Uninstall Drivers

Enter “Start”>_“Programs”>_ Choose “Uninstall” under LIVECAPSERVICE, UPMOST, Silicon Laboratories.

3.4.1 Confirm to uninstall driver

See Fig 3-17, click YES to confirm uninstall “LIVECAPSERVICE”

*This dialogue language will follow user’s PC OS. *

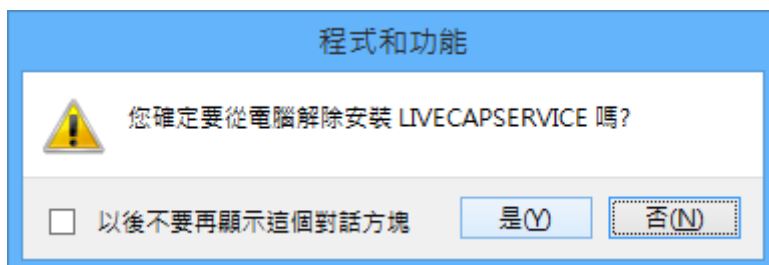


Fig 3-17 Confirm to uninstall “LIVECAPSERVICE”

Uninstall “Silicon Laboratories” and “UPMOST” driver by clicking “Yes”. See Fig 3-18.

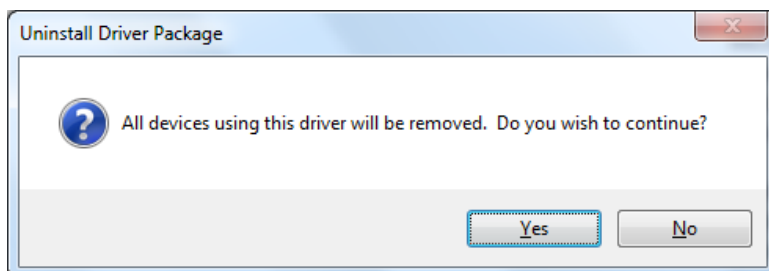


Fig 3-18 Confirm to uninstall “Silicon Laboratories”and“UPMOST” drivers

3.4.2 Preparing to remove driver

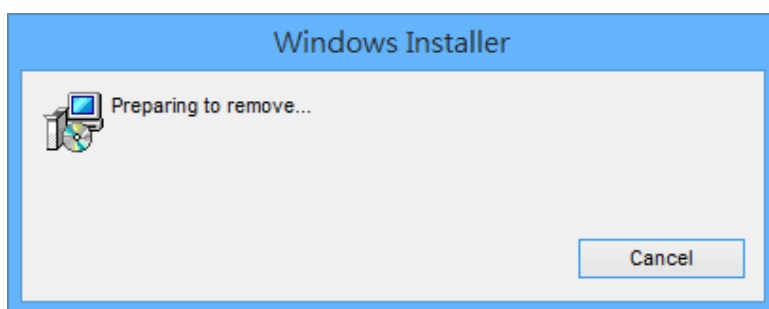


Fig 3-19 Preparing uninstall “LIVECAPSERVICE” driver

3.4.3 Closed Related Programs

Select Automatically close program.

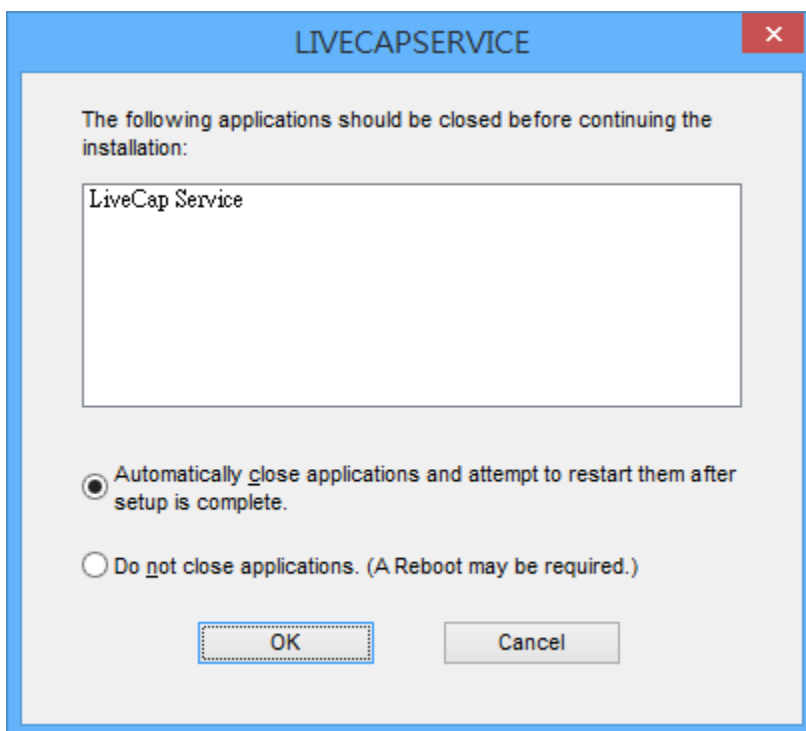


Fig 3-20 Closed LIVECAPSERVICE related program

3.4.4 Uninstall the LIVECAPSERVICE driver

Please wait while "LIVECAPSERVICE" uninstalling

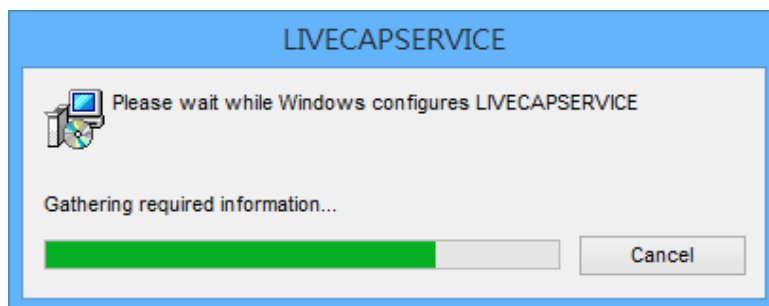


Fig 3-21 Uninstalling LIVECAPSERVICE driver

3.4.5 Uninstall LIVECAPSERVICE completed

When "LIVECAPSERVICE" driver removed, the program will close all actions.